

Unless otherwise noted all multiple units are to be nailed & Bolted together on site as follows:-

Nail all rafters and internal members together in accordance with the following details prior to bolting the ceiling members

Ceiling Tie Level Only

All Ceiling Tie members are to be bolted using M12 Galvanised bolts with 50mm washers spaced at 600mm centres

Bolt lengths for Ex 38mm width Timbers = 100mm (2Ply) 140mm (3Ply) 180mm (4Ply)
 Bolt Lengths for Ex 50mm Width Timbers = 120mm (2Ply) 180mm (3Ply) 220mm (4Ply)

Rafter Level and Internal Members

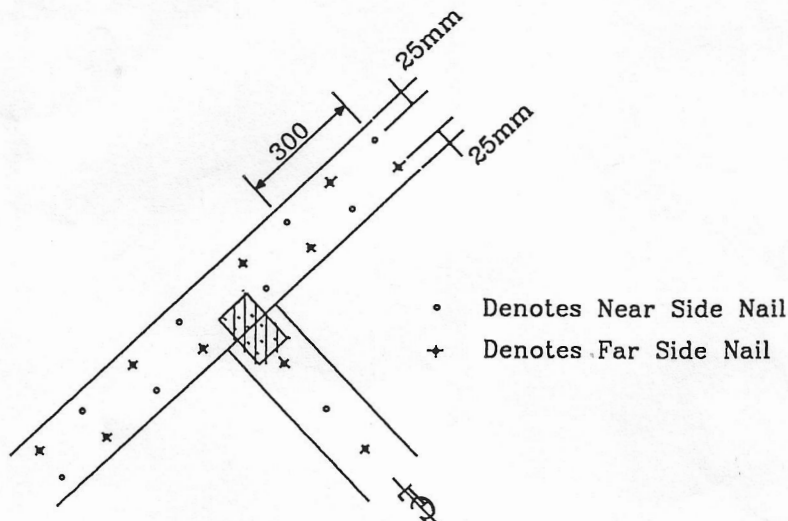
all Rafter members are to be nailed in accordance with the following details

2 Ply Units - Nail trusses as detailed from each side

3 Ply Units - Nail 2 trusses together as detailed from each side. Nail 3rd truss to 1 side as detailed.

4 Ply Units - Nail 2 trusses together as detailed from each side. Nail 3rd & 4th truss to each side of double unit as detailed.

All Internal members are to be nailed at 300mm centres as noted above along centre line of member



All Nails are to be 3.75mm (9swg) Galvanised
 Use 75mm long Nails for Ex 38mm Width Timbers
 Use 100mm Long Nails for Ex 50mm Width Timbers

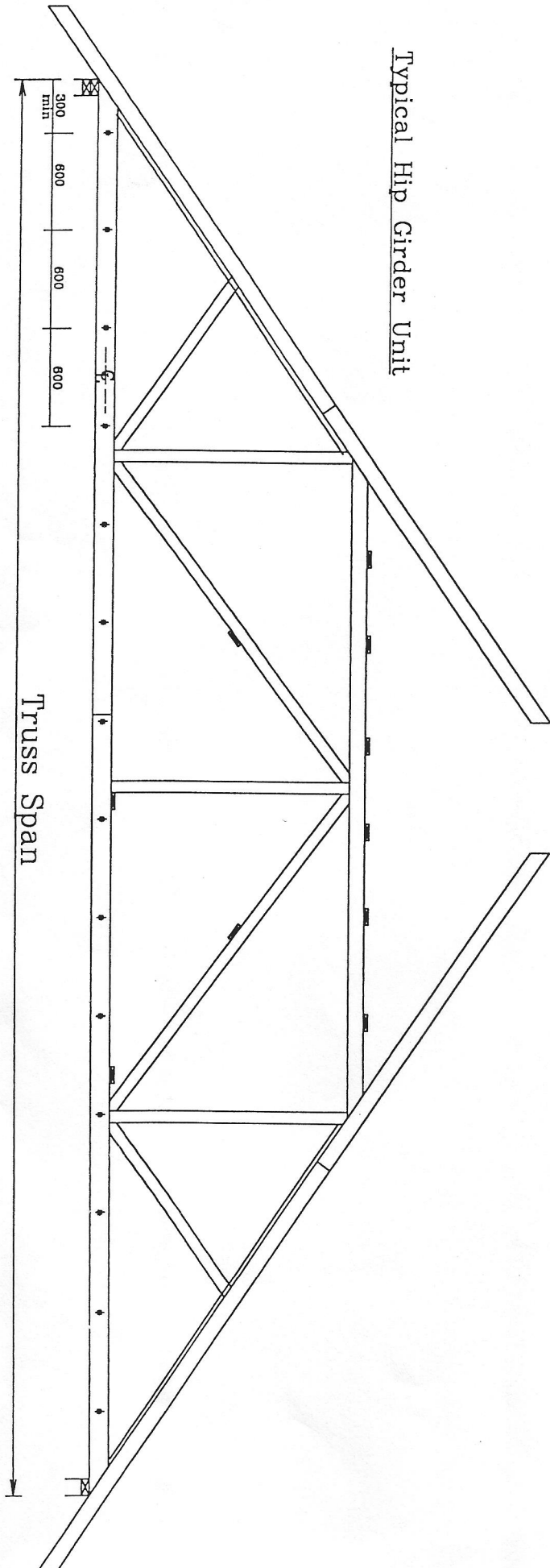
Edge Distance to be 25mm

End Distance to be 100mm

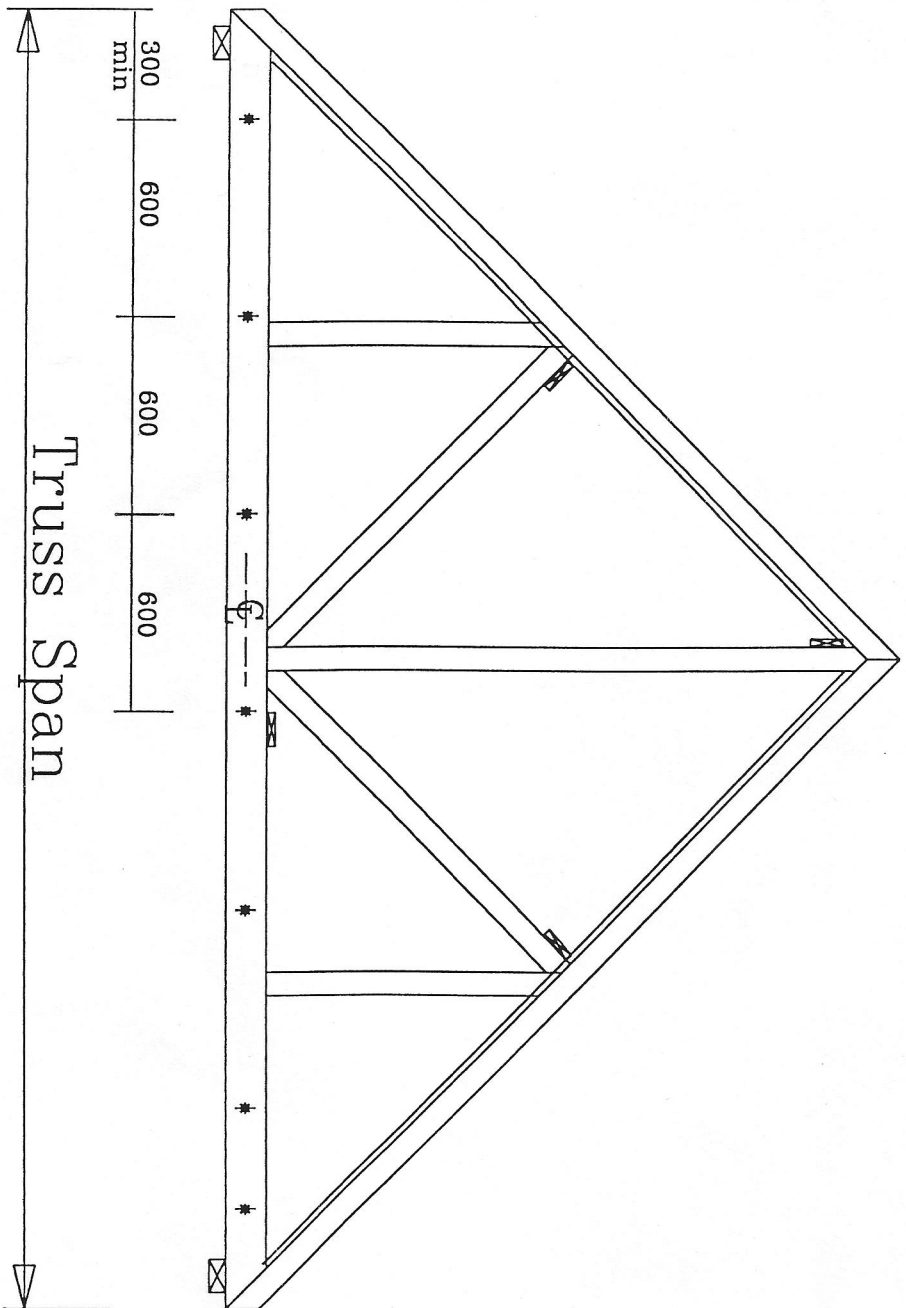
Spacings to be 300mm Staggered from each side

Refer also to notes on
 Drawing Specific House
 Type Drawings

Typical Hip Girder Unit



Typical Howe Girder Unit



Typical Attic Truss

