

Safe Storage of **TRUSSED RAFTERS** for Prolonged Time

Prolonged Storage

Trussed Rafters will sometimes need to be stored for longer than usual. The following guidance will help to keep these products in the best possible condition until sites can return to work.

Previous experience indicates that Trussed Rafters stored fully in accordance with the recommendations below for between three and six months will typically suffer no significant reduction in performance.

Site Storage of Trussed Rafters

Trussed Rafters can be safely stored vertically or horizontally at ground level or on any other properly designed temporary storage platform above ground level. Whichever method and location is chosen the temporary support must ensure the bundled or individual Trussed Rafters are fully supported and restrained to prevent them toppling over putting staff and others at risk. Such storage should also be set out to ensure that the units do not make direct contact with the ground or any vegetation and be so arranged as to prevent distortion.

Delivery of Trussed Rafters should, wherever possible, be organised to minimise site storage time; however, where longer periods of storage are anticipated then they should be protected with covers fixed in such a way as to allow proper ventilation around the Trussed Rafters.

When stored vertically bearers should be positioned at the locations where support has been assumed to be provided in the design with stacking carried out against a firm and safe support or by using suitable props (Fig. 1). In both cases the support must be appropriate for the size and weight of Trussed Rafters being stored.

When Trussed Rafters are stored horizontally, level bearers should be positioned beneath each truss node (minimum) to prevent any deformation and distortion (Fig. 2). Other methods of storing Trussed Rafters may cause deformation and distortion unless specific provision has been made in the design for an alternative temporary support load case.

Where Trussed Rafters have been installed but are not otherwise covered, the air can easily circulate keeping the Trussed Rafters in a structurally sound condition for up to six months. However, such roof structures should always be fully braced to ensure the roof construction does not present a risk to site staff or passers by.

Restarting on Site

In most cases where the above recommendations have been fully followed there should be no problem in re-commencing work. However, an initial visual inspection by yourselves should always be undertaken, and any concerns raised immediately with Harmony. Extreme care should be exercised when removing the bindings from a bundle of Trussed Rafters. As a precaution against destabilisation of the whole bundle of Trussed Rafters, it is recommended that prior to the removal of the bands, timber battens are fixed across the bundle at several locations with a part driven nail into every Trussed Rafter. Such a simple precaution will allow the safe removal of single Trussed Rafters once the bands are removed. A suggested arrangement of batten locations is shown in Fig. 3.

Fig. 1 Safe vertical storage

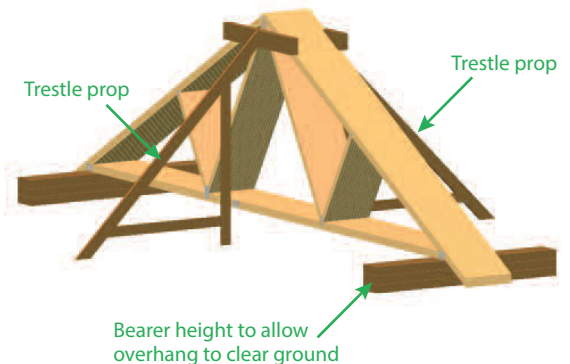


Fig. 2 Safe horizontal storage

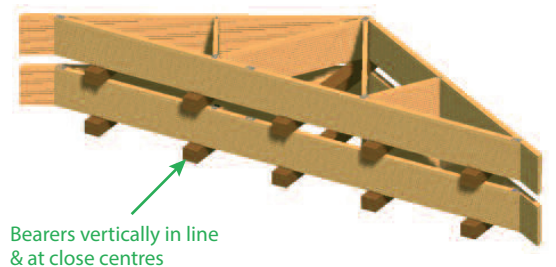


Fig. 3 Safe method of breaking a bundle of trusses

